

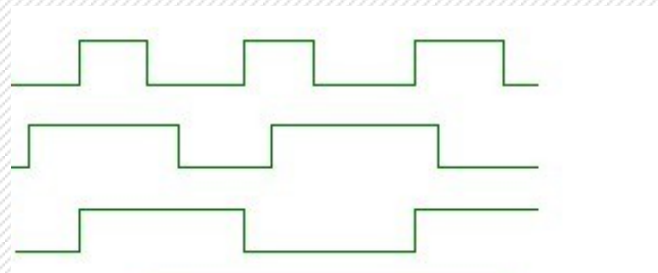
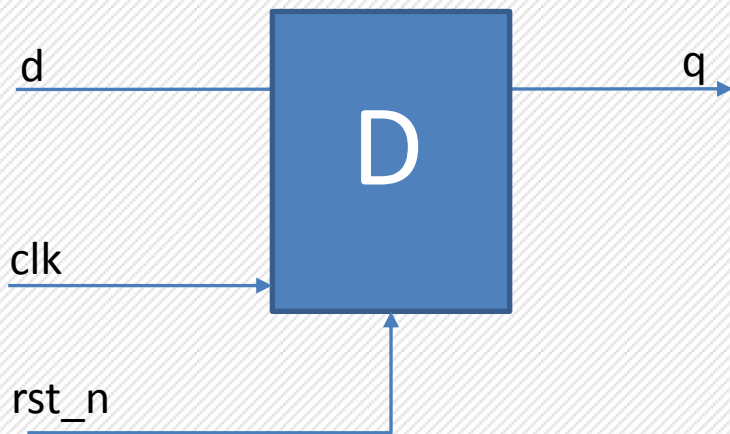
# D触发器及代码

主讲人：潘老师



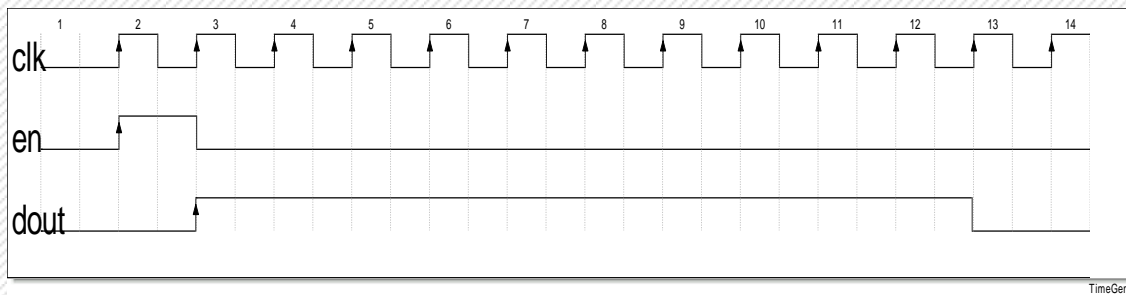


## D触发器、波形、代码



```
1 always @(posedge clk or negedge rst_n) begin
2     if(rst_n==1'b0) begin
3         q <= 0;
4     end
5     else begin
6         q <= d;
7     end
8 end
```

1. 时钟上升沿才变化
2. 时钟上升沿时，将D的值赋给Q。即先有上升沿，才有信号变化



# THANKS

